



WELCOME to UMBC ASME

American Society of Mechanical Engineers

GBM #1



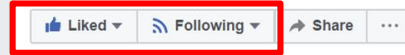
GET UPDATES

1. EMAIL LIST
2. FACEBOOK
3. MyUMBC

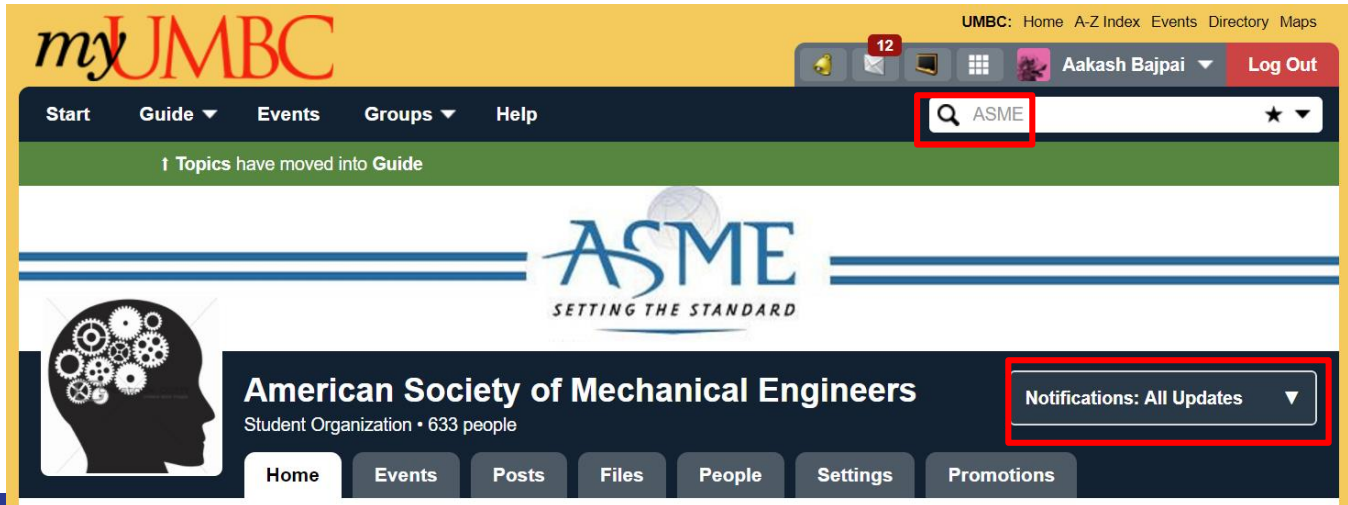


UMBC50

GRIT & GREATNESS



Send Message



When do we meet?

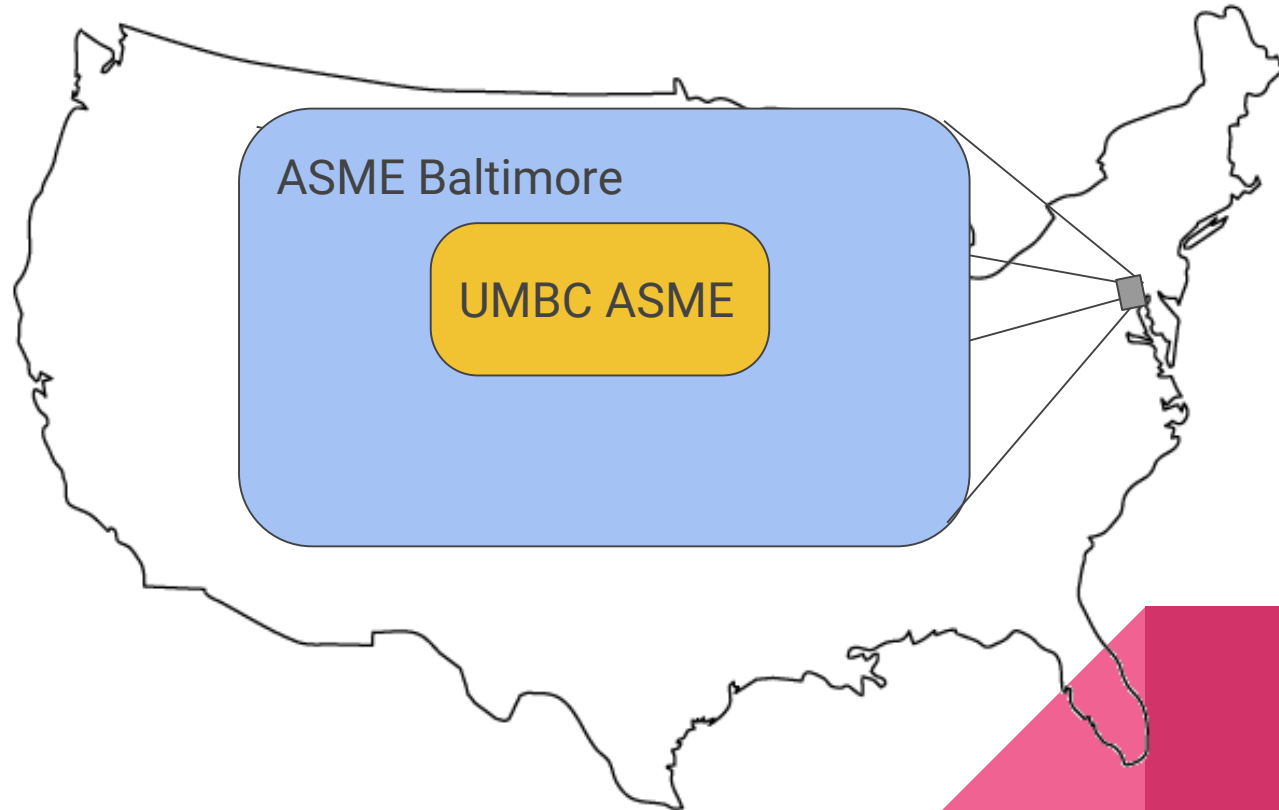
ASME GBMs :

Second and Fourth Wednesday of the month!

What is ASME?

- Founded in 1880
- National Not-for-profit Organization
- Mission Statement:
 - “To serve diverse global communities by advancing, disseminating and applying engineering knowledge for improving the quality of life; and communicating the excitement of engineering”
- 140,000+ Members in 158 Countries
- Dedicated to outreach, education, training, advocacy, philanthropy
- Official student membership is 25\$
 - NOT REQUIRED - Ex. Eboard

What is UMBC ASME?



What does UMBC ASME Do?

Outreach:

Let's Get Techy

Public Schools

Professional Develop.

Workshops

Speakers

Projects

V-LINC

3D printer

Socials

E.F.D. 2017

Rootbears & Resumes

Fundraising

Bake Sales

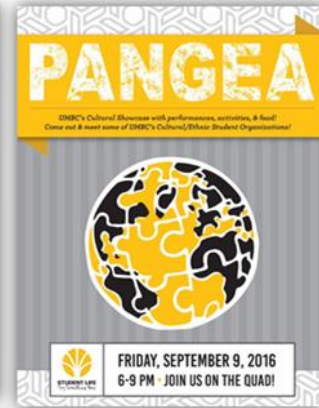
Food food food food food food food

Who is UMBC ASME?

Officer Introductions!

President **AAKASH BAJPAI**

- From Baltimore MD
- Indian American
- MECHE, ENTR
- Senior, TA, Undergrad Researcher



Caltech



Currently,

- ASME President
- PANGEA Cultural Showcase Founder
- Tau Beta Pi Treasurer



Vice President **MATT DODGE**

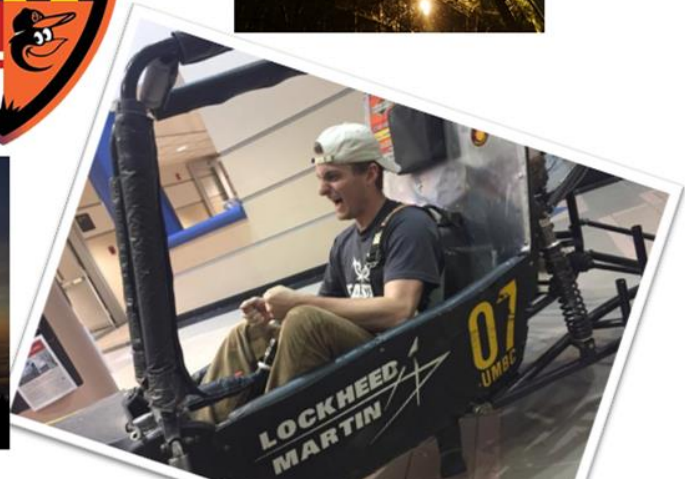
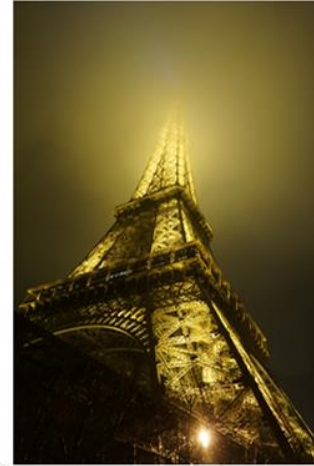
Bio

- MECHE, ENTR
- Senior



Currently

- Academic Excellence
Chair of NSBE
- Still hoping to be the
Baja team driver with
0 experience



Secretary

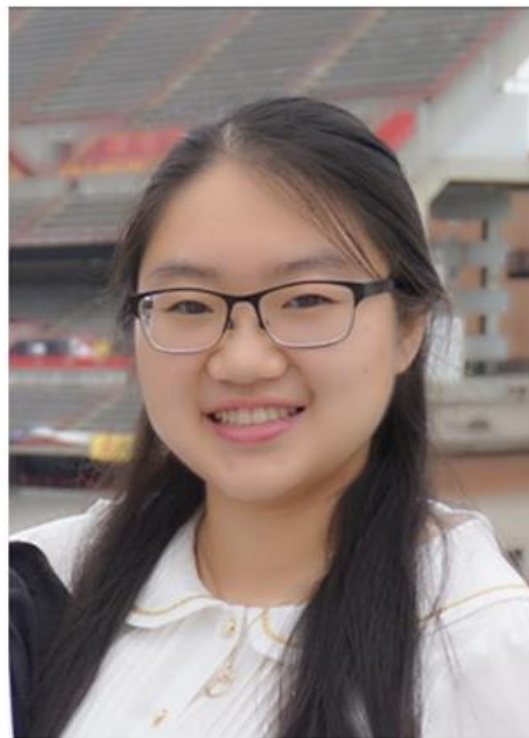
Emily Duan

Past Involvement:

- Former Social Chair
- Outreach:
 - *Let's get Techy*
 - *Northfield Elementary STEM day*

On campus work:

- Volunteer in Autonomous Systems Research Lab to help a Ph.D. student in research



Junior

Treasurer

Rebekah Kempcke

▶ Bio

▶ From Baltimore, MD

▶ Mechanical Engineer, Junior

▶ Currently

▶ Tau Beta Pi

▶ Club Lacrosse

▶ CWIT Student Council

▶ BARCS



Project Lead **NICHOLAS RABUCK**

Bio

- From Hershey, PA
- MECHE
- Senior



Currently,

- ASME Hovercraft Project Lead
- U.S. Army Aberdeen Test Center Engineering Intern
- UMBC Architectural /Engineering Assistant
- Lactose Intolerant



Project Lead

BRIAN WORONOWICZ

- From Pasadena MD
- MECHE major, CMSC minor
- Sophomore



Currently,

- RC Water Cleaner Project Lead
- 3D UMBC Lead Robotics Engineer
- Trying to teach myself how to kickflip



Robotics



Professional Development

Ola Akinsola

- ❖ From West Orange, NJ
- ❖ Mechanical Engineer
- ❖ Junior, Undergrad Research

Currently:

- ❖ 1/2 of Professional Development

Hobbies:

- ❖ Animation, soccer



NORTHROP GRUMMAN

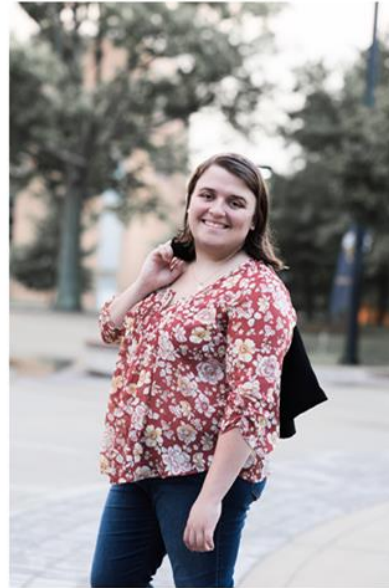
Professional Development

SHANNON CLANCY

- From Pasadena MD
- MECHE
- Junior, ENES TA,
Apartments RA



- Currently,
- CWIT Affiliate
 - Breakout
Escape Rooms



BREAKOUT



Fundraising Chair

LOC PHAM

Bio

- From Freehold, NJ
 - MECHE, ENTR
 - Senior, Transfer Student
 - Undergraduate Researcher
- Currently,
- U.S.Army Engineering Intern
 - Ball is life
 - Yes, I was sleeping in class



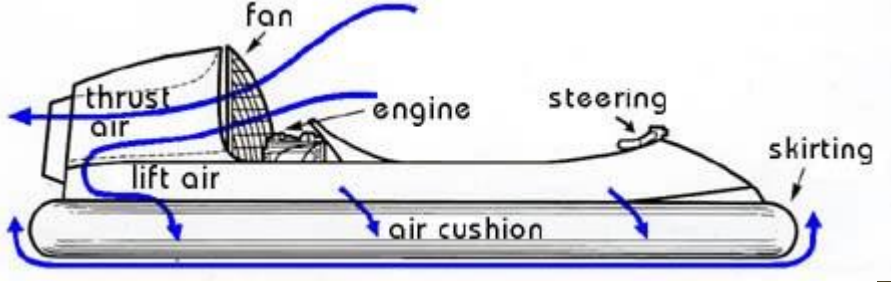
Social Chair

Jenette Philips – Recently Recruited, so slide is absent!

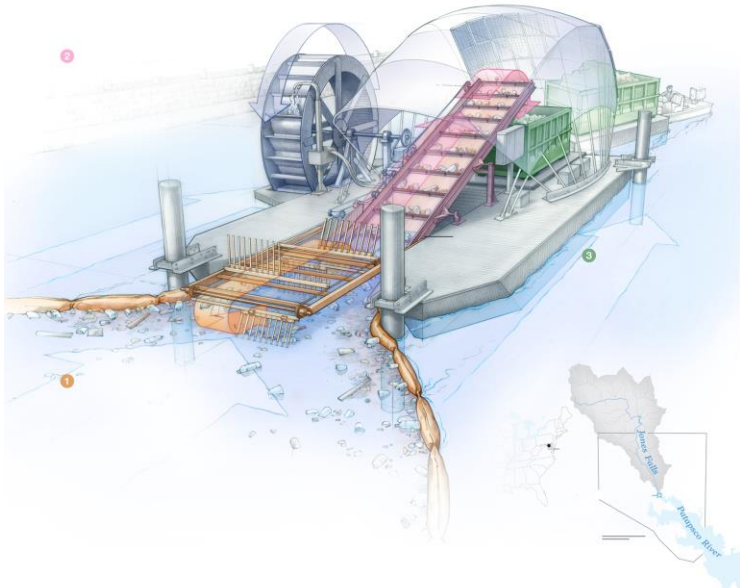
Mentoring Chair

Kevin Gill – Recently Recruited, so slide is absent!

Hovercraft Go Cart



Pond Cleaner



Water Wheel Facts

The Inner Harbor Water Wheel is capable of removing 50,000 lbs. of trash every day.

On a sunny day the solar panels can produce 30 kilowatt-hours of electricity. That's enough to power a typical Maryland home for one day.

Water Wheel Parts

| | |
|---|--|
| <ol style="list-style-type: none"> 1 Two trash containment booms direct trash and debris to the front of the Water Wheel 2 The debris raking system helps to move trash and debris to the front of the conveyor belt 3 The conveyor belt lifts trash and debris from the water and deposits it into the dumpster barge | <ol style="list-style-type: none"> 4 The sail fabric cover protects the Water Wheel from wind and rain 5 The water wheel harnesses the current of the river to turn the conveyor belt 6 The dumpster barge stores trash and debris 7 The solar panel array provides additional power to turn the water wheel |
|---|--|

Direction of river current

GBM Dates

Sept. 27th - Professional

Oct. 11th - Social

Oct. 25th - Professional

Nov. 8th - Social

Nov. 22nd - Professional

Dec. 6th - Social (it's lit)

Committees Signups! GET INVOLVED!

Hovercraft,

RC Boat

Fundraising

Socials

Professional Development

Outreach