

International Travel Policy: Update

Dr. David L. Di Maria
Senior International Officer and
Associate Vice Provost for International Education

International Travel Policy

Policy

V. UNIVERSITY POLICY

In addition to all other required academic and administrative approvals, all University Travelers participating in university-sponsored international travel must adhere to the following:

A. *International Travel Registry:*

All University Travelers, whether participating in individual or group travel, must register their travel plans in the UMBC International Travel Registry. This will ensure the travelers are enrolled in UMBC's international travel insurance policy and assist University officials to locate and communicate with impacted University Travelers in the event of an emergency or crisis.

Approval Process

1. Int'l Travel Registry
2. Travel Pre-Approval System
3. CISI Int'l Insurance

Requirements During the Pandemic

Basic Requirements for All University-related International Travelers during COVID-19

1. *COVID-19 vaccination or authorized exemption on file*

Information on how to report vaccines or request an exemption is available on UMBC's [Vaccine Information page](#)

2. *Ability to meet the host country's visa and/or entry requirements related to COVID-19*

Country specific information related to COVID-19 is available from the [U.S. Department of State](#)

3. *Commitment to following [CDC guidance](#) on International Travel During COVID-19*
4. *Commitment to complying with local restrictions at the destination*

Country specific information related to COVID-19 is available from the [U.S. Department of State](#)

5. *Enrollment in UMBC's International Travel Registry*

Complete the registry by visiting <https://travelregistry.umbc.edu/login>

6. *Enrollment in UMBC's International Travel Insurance*

The traveler will receive enrollment information after their travel request is approved

7. *Registration with the U.S. Department of State's Smart Traveler Enrollment Program (STEP), if the traveler is a citizen or national of the United States*


International Travel Registry

Welcome to UMBC Travel Site! Please Register your Travel here!

UMBC USER LOGIN

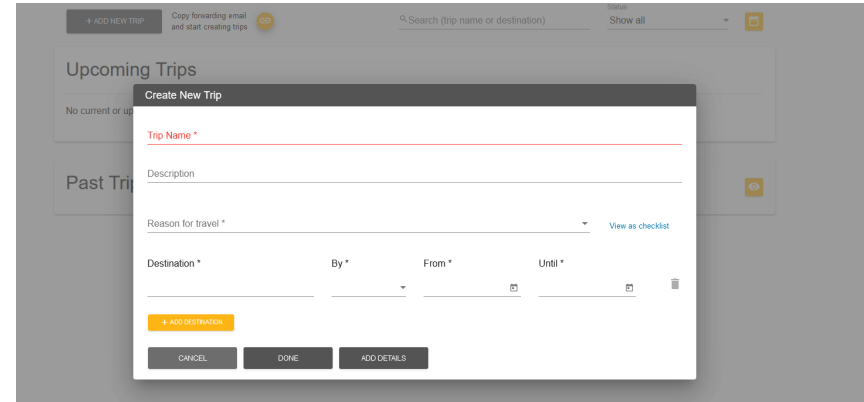
or Log in with

Username *

Password * 

LOGIN

[Forgot your password ?](#)



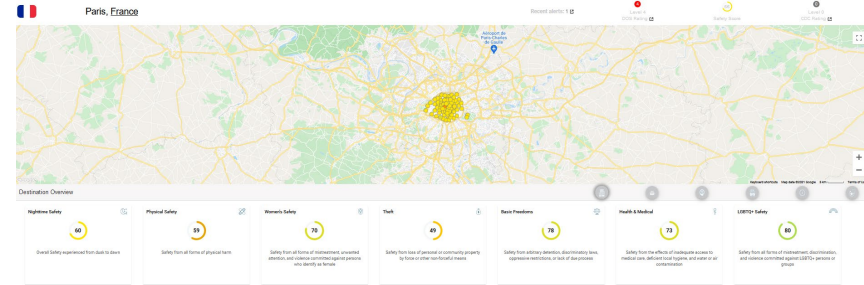
The screenshot shows a 'Create New Trip' modal form. It includes the following fields and options:

- Trip Name ***: A text input field with a red asterisk indicating it is required.
- Description**: A text input field.
- Reason for travel ***: A dropdown menu with a red asterisk and a 'View as checklist' link.
- Destination ***: A text input field with a red asterisk.
- By ***: A dropdown menu with a red asterisk.
- From ***: A date input field with a red asterisk.
- Until ***: A date input field with a red asterisk.
- + Add destination**: A button to add additional destinations.
- CANCEL**, **DONE**, and **ADD DETAILS**: Action buttons at the bottom.

<https://travelregistry.umbc.edu>

Alert Traveler

| Severity | Impacted Travelers | Incident | Country | Headline | Start/End Dates |
|---------------|---------------------------|-----------------------------|----------------|--|--|
| Informational | Total : 1 Add Check-In | Protest | Spain | Spain - Solidarity Protest Oct. 11 - Bilbao | 2019-10-11 12:03 UTC 2019-10-11 23:59 UTC |
| Warning | Total : 1 Add Check-In | Security incident | United Kingdom | UK - Security Incident (Update 1) - Manchester | 2019-10-11 11:54 UTC 2019-10-11 23:59 UTC |
| Critical | Total : 6 Add Check-In | Typhoon Hagibis | Japan | Philippine Sea - Typhoon Hagibis (Update 9) | 2019-10-11 11:29 UTC 2019-10-12 23:59 UTC |
| Warning | Total : 1 Add Check-In | Security incident | United Kingdom | UK - Security Incident - Manchester | 2019-10-11 11:02 UTC 2019-10-11 23:59 UTC |
| Informational | Total : 1 Add Check-In | Possible flight disruptions | Kenya | Kenya - Possible Flight Disruptions - Nairobi | 2019-10-11 09:42 UTC 2019-10-11 23:59 UTC |
| Warning | Total : 6 Add Check-In | Typhoon Hagibis | Japan | Philippine Sea - Typhoon Hagibis (Update 8) | 2019-10-10 22:09 UTC 2019-10-12 23:59 UTC |
| Warning | Total : 1 Add Check-In | Anti-Brexit rally | United Kingdom | UK - Anti-Brexit Rally Oct. 19 - London | 2019-10-10 17:57 UTC 2019-10-19 23:59 UTC |
| Warning | Total : 1 Add Check-In | Spanish National Day | Spain | Spain - Spanish National Day - Nationwide | 2019-10-10 16:28 UTC 2019-10-12 23:59 UTC |



Risk Assessment

Travel to High Risk Locations

The University will evaluate the known risks of international travel based on levels established by the Centers for Disease Control and Prevention (CDC) and the U.S. Department of State. These include:

- CDC [COVID-19 Notices](#)
- CDC [Travel Health Notices](#)
- U.S. Department of State [Travel Advisories](#)

Requests to travel through or to international destinations subject to an elevated risk level will require additional screening by UMBC's International Travel Review Committee. If the request is approved, then the traveler will receive location-specific guidance for mitigating risks.

Risk Assessment

Approvers will consider the highest risk level of the three sources referenced in the table below.

| Risk Assessment Criteria | | | Travel Permitted | |
|--|--|--|------------------|---------|
| | | | Employee | Student |
| Countries and territories through which travel is proposed | CDC: COVID-19 Level | Level Unknown | Maybe | No |
| | | Level 4: Very High | Maybe | No |
| | | Level 3: High | Maybe | Maybe |
| | | Level 2: Moderate | Yes | Yes |
| | | Level 1: Low | Yes | Yes |
| | CDC: General Health Notice Level | Warning Level 3: Avoid Nonessential Travel | Maybe | No |
| | | Warning Level 2: Practice Enhanced Precautions | Yes | Yes |
| | | Warning Level 1: Practice Usual Precautions | Yes | Yes |
| | U.S. Dept. of State: Travel Advisory Level | Level 4: Do Not Travel | Maybe | No |
| | | Level 3: Reconsider Travel | Maybe | Maybe |
| | | Level 2: Exercise Increased Caution | Yes | Yes |
| | | Level 1: Exercise Normal Precautions | Yes | Yes |