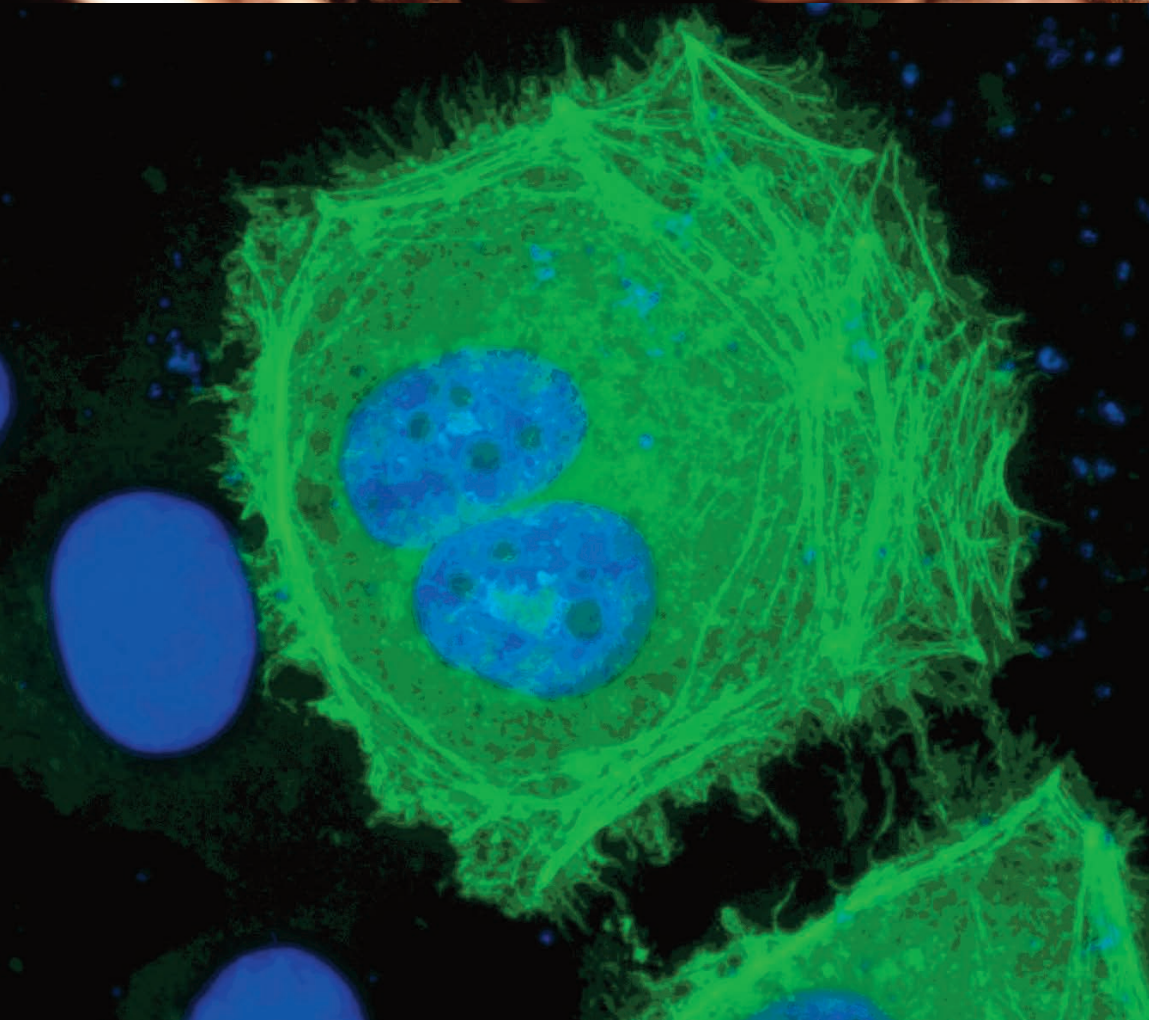


Masters of Science in APPLIED BIOLOGY



Individualized Attention:

Join a superior learning community and benefit from student-centered faculty mentoring.

Opportunity:

Focus on a chosen area of research, while developing broad expertise in modern biological sciences.

Preparing Future Scientists:

Gain valuable experience and knowledge that will support further educational goals or lead directly to employment.

Areas of Faculty Research

- Behavioral ecology
- Bioinformatics
- Cell and molecular biology
- Conservation biology
- Ecology and Evolutionary biology
- Environmental nutrient management
- Historical ecology
- Marine and estuarine parasitology
- Microbiology
- Natural history of plants and animals
- Population genetics
- Physiology
- Plant genetics

Financial Support

Full-time students are eligible for support in the form of teaching, research, or graduate assistantships.

For more information about the graduate program or how to apply:



www.salisbury.edu/biology/MS_Applied_Biology.html

Learn ♦ Live ♦ Lead



Salisbury
UNIVERSITY

A Maryland University of National Distinction

www.salisbury.edu/biology/MS_Applied_Biology.html