

GSPD 2023

How to Fund Your Graduate Education **START NOW!**

Presented by
Patti Ordóñez, PhD
NSF GRFP Fellow
Equity in Computing Advocate

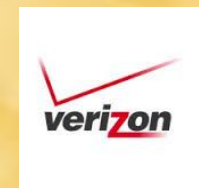


Graduate Research Fellowship Operations Center





FORD FOUNDATION FELLOWSHIP PROGRAM



National Science Foundation Graduate Research Fellowship Program
Information: www.nsf.gov/grfp and www.nsfgrfp.org
Apply at: <https://www.research.gov/>



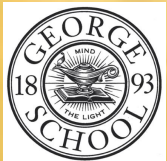
Who is Patti?



Teacher to
Techie

Technical
Trainer

Associate
Professor



National Science Foundation Graduate Research Fellowship Program
Information: www.nsf.gov/grfp and www.nsfgrfp.org

Apply at: <https://www.research.gov/>



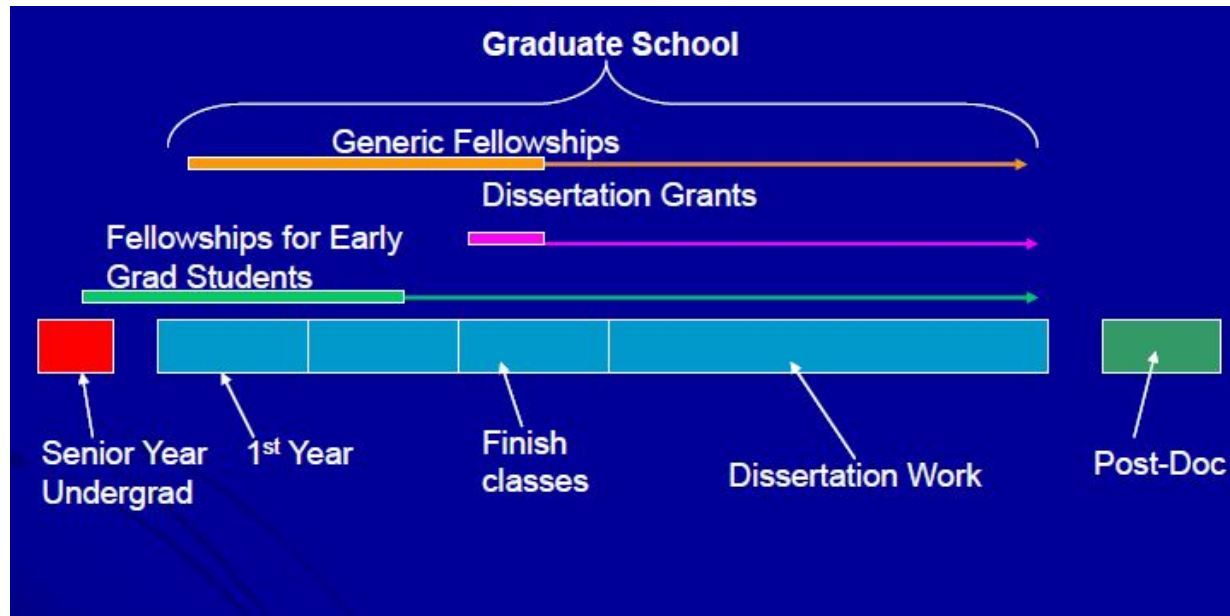
Seminar Outcomes

- Inform you of graduate funding opportunities
- Introduce several domestic and international fellowships
- Guide preparation of winning applications
- Discuss Personal Statement and Proposal
- Brainstorm on Personal Statements
- Begin to write Personal Statements



When can I get the money?

- Continuum



Where is the money?

- Assistantships vs. Fellowships
- Types of Fellowships
 - University – LSAMP BD, GAANN/Jacob Javits, Chateaubriand
 - State & Regional – SREB, local congress representatives
 - Private - Hertz, Ford Foundation, Hughes, Woodrow Wilson, Jack Kent Cooke
 - Industry - Honda, IBM, GEM...
 - Agency - NASA, EPA, DHS, DoEd, DoEnergy, DOD, Air Force
 - National/International - NSF GRFP/Fulbright



The Good, the Bad and the Ugly

	University Fellowship	Advisor Support	External Funding
Choose the advisor YOU want	May vary	Difficult to change advisors	Easier to change advisors
Advisor runs out of money	Department may support student, may need to switch advisors, sometimes dismissal	You or advisor need to come up with new source of funding	You will still be paid!
Partial funding	First year only	At advisor's discretion	Many fellowships for 3+ years
Teaching requirement	Usually	At advisor's discretion (may ask you to teach to supplement their financial support)	NO
Makes you more competitive for (academic) jobs	No	No	YES

National Science Foundation Graduate Research Fellowship Program
 Information: www.nsf.gov/grfp and www.nsfgrfp.org

Apply at: <https://www.research.gov/>



Show me the money...

- <http://gradschool.umbc.edu/funding/fellowships/>
- <http://www.fastweb.com/>
- <https://bigfuture.collegeboard.org/scholarship-search>
- http://sites.nationalacademies.org/pga/Fellowships/PGA_046301
- <http://www.scholarshipexperts.com/>
- <http://fulbrightonline.org/> (International)
- <https://www.chateaubriand-fellowship.org>
- <https://grad.illinois.edu/sites/default/files/pdfs/walkerrobinnsfguidesheets.pdf>



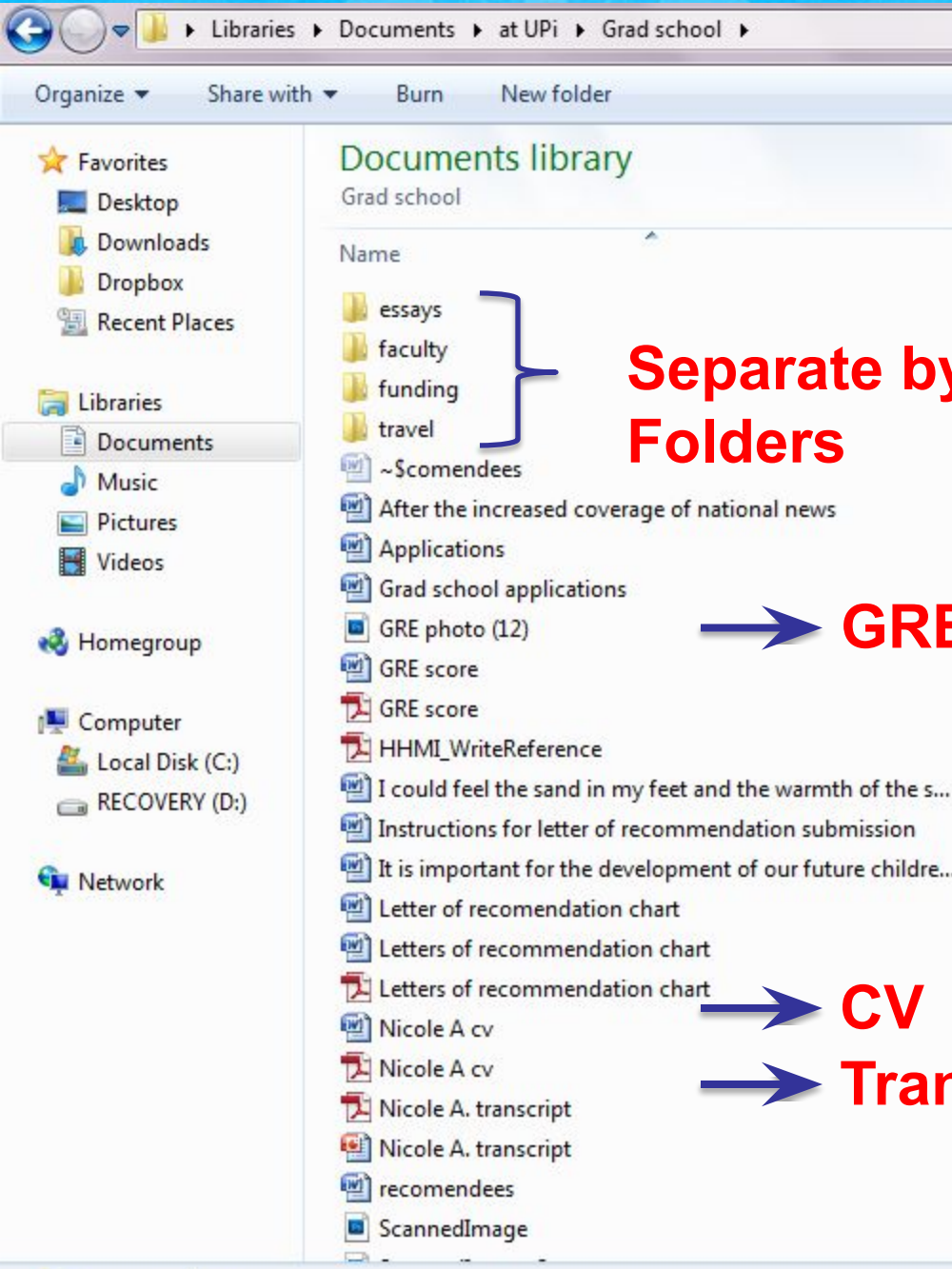
International style money

- Websites to help you find the money
 - <http://www.hhmi.org/programs/international-student-research-fellowships>
 - <http://www.conacyt.gob.mx/index.php/becas-y-posgrados>
 - <http://www.scholarshipportal.com/>
 - http://sites.nationalacademies.org/pga/Fellowships/PGA_046301
 - <http://www.scholarshipexperts.com/>
 - <http://www.intlstudent.org/scholarships.html>
 - <http://foreign.fulbrightonline.org/>



Organize Yourself





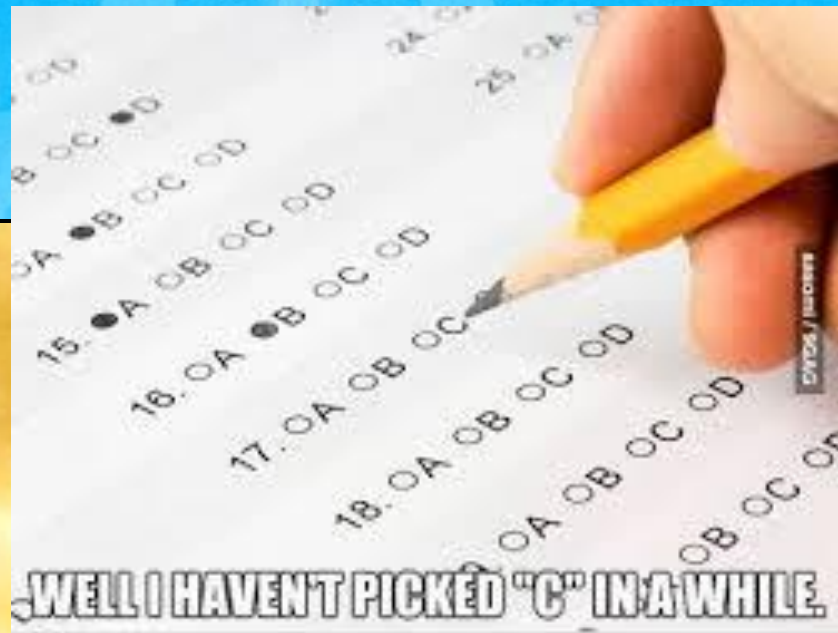
**Separate by
Folders**

GRE Scores

CV

Transcript





→ **GRE
Scores**

→ **CV**

→ **Transcript**

Keep Track

- Universities
- Links
- Usernames
- Passwords
- Essay questions
- Transcript submission instructions
- Application submission instruction
- Color coordinated (helps!)



Link	username	deadline	Statement of Purpose	Research Experiences	TOEFL	GRE	Transcripts	Garcia	Marshall	Rudnick
https://apply.ucsf.edu/gradu	edwin_rosado5@upr.ed	1-Dec	650 words	650 words	X	X	HardCopy	XX	XX	XX
http://studentaffairs.stanfo	edwin_rosado5@upr.ed	3-Dec	Two pages in length		X	X	HardCopy	XX	XX	XX
https://app.applyyourself.c	ZC267M3365N	2-Dec			X	X	HardCopy	XX	XX	XX
https://www.yale.edu/grad	85ZA48MF539	1-Dec			X	X	online	XX	XX	XX
https://app.applyyourself.c	edwin_rosado5	2-Dec			X	X	Del and onlin	XX	XX	XX
http://www.rackham.umich.edu/prospective-stude		1-Dec			X	X	online	XX	XX	XX
https://gradapply.mit.edu/t	edwinrosado5	1-Dec			X	X	online	XX	XX	XX

Sample Charts

Link	username	deadline	Statement of Purpose	Research Experiences	TOEFL	GRE	Transcripts	Garcia	Marshall	Rudnick
https://apply.ucsf.edu/graduate	edwin.rosado5@upr.edu	1-Dec	650 words	650 words	X	X	HardCopy	XX	XX	XX
http://studentaffairs.stanford.edu	edwin.rosado5@upr.edu	3-Dec	Two pages in length		X	X	HardCopy	XX	XX	XX
https://app.applyyourself.com	ZC267M3365N	2-Dec			X	X	HardCopy	XX	XX	XX
https://www.vale.edu/graduate	85ZA48MF539	1-Dec			X	X	online	XX	XX	XX
https://app.applyyourself.com	edwin.rosado5	2-Dec			X	X	Del and online	XX	XX	XX
http://www.rackham.umich.edu/prospective-student		1-Dec			X	X	online	XX	XX	XX
https://gradapply.mit.edu/	edwinrosado5	1-Dec			X	X	online	XX	XX	XX

Fellowship	Letter Submission	Deadline
NSF GRFP	Recommendation letter must be submitted electronically via the web application system. Automated email will be sent with detailed instructions for submitting the letter.	November 14 th , 2013
Ford Foundation Fellowship Program- <u>Predoctoral</u> Competition	Recommendation letter must be submitted electronically via the web application system. Automated email will be sent with detailed instructions for submitting the letter.	January 9 th , 2014

Graduate Program	Letter Submission	Deadline
UCSF Biomedical Sciences BMS	Recommendation letter must be submitted electronically via the web application system. Automated email will be sent with detailed instructions for submitting the letter.	December 1 st , 2013
Yale Combined Program in the Biological and Biomedical Sciences (BBS)	Recommendation letter must be submitted electronically via the web application system. Automated email will be sent with detailed instructions for submitting the letter.	December 1 st , 2013
University of Pennsylvania- Biomedical Graduate Studies	Recommendation letter must be submitted electronically via the web application system. Automated email will be sent with detailed instructions for submitting the letter.	December 2 nd , 2013
Stanford University- Stem Cell Biology and Regenerative Medicine	Recommendation letter must be submitted electronically via the web application system. Automated email will be sent with detailed instructions for submitting the letter.	December 3 rd , 2013



Sample Charts

University	Program or Department	How to submit the letter	Deadline
Washington University at St Louis	Division of Biology and Biomedical sciences (DBBS)	Submit online. An email will be sent to the recommender.	As soon as possible but before November 23, 2012
NSF GRFP	-	Submit online. An email will be sent to the recommender.	November 27, 2012
MIT	Department of Biology	Submit online. An email will be sent to the recommender.	December 1, 2012
UT Southwestern	Graduate School of Biomedical Sciences	Submit online. An email will be sent to the recommender	December 1, 2012
UC Berkeley	Molecular and Cell Biology	Submit online. An email will be sent to the recommender.	December 1, 2012
UC San Diego	Division of Biological	Submit online. An email	December 1, 2012

Libraries Documents at UPI Grad school funding NSF GRFP

Organize Share with Burn New folder

Documents library NSF GRFP

Many Drafts!!

Many Mentors!!

Name	Date modified
27.full	11/4/2012 7:43 PM
nicotinic_ach_receptors_review	11/4/2012 4:43 PM
NS NSF personal statement (Nicole A.)	11/16/2012 5:36 PM
NS NSF research experience (Nicole A.)	11/16/2012 5:45 PM
NS NSF research proposal revised draft (Nicole A.)	11/16/2012 6:13 PM
NSF GRFP personal statement (Nicole A.)	11/16/2012 5:37 PM
NSF GRFP research experience (Nicole A.)	11/16/2012 5:46 PM
NSF GRFP research proposal (Nicole A.)	11/16/2012 6:02 PM
NSF GRFP	11/12/2012 7:33 PM
NSF personal statement (Nicole A.)	11/10/2012 3:02 PM
NSF personal statement	11/4/2012 1:13 PM
NSF personal statement_EAP_NA1	11/4/2012 3:32 PM
NSF personal statement_EAP_NA1_EAP	11/5/2012 9:29 AM
NSF personal statement_EAP_NA1_EAP_NAS	11/5/2012 10:00 AM
NSF personal statement_EAP_NA1_EAP_NAS_EAP	11/6/2012 12:04 PM
NSF personal statement_EAP_NA1_EAP_NAS_EAP_NAS	11/6/2012 12:04 PM
NSF research experience (Nicole A.)	11/10/2012 3:00 PM
NSF research experience	11/5/2012 2:01 PM
NSF research experience_EAP	11/6/2012 11:51 AM
NSF research experience_EAP_NAS	11/6/2012 11:51 AM
NSF research proposal (Nicole A.)	11/10/2012 3:03 PM
NSF research proposal draf1	11/5/2012 8:51 AM
NSF research proposal draf1_EAP	11/6/2012 12:06 PM
NSF research proposal draf2	11/9/2012 11:04 AM



Many Mentors

- Identify mentors that are **eager** to be exposed to your **ideas** and **willing to guide** you during the process.
- Choose those mentors that encourage **strategic thinking and creativity** while imparting a **set of skills**.
- Mentors **in and outside** of your field of study.

National Science Foundation Graduate Research Fellowship Program
Information: www.nsf.gov/grfp and www.nsfgrfp.org

Apply at: <https://www.research.gov/>



Reflection

- With what you know now, how are you better prepared to fund your graduate education?





National Science Foundation

The NSF Graduate Research Fellowship Program



Graduate Research Fellowship Program Operations Center



Questions to Answer

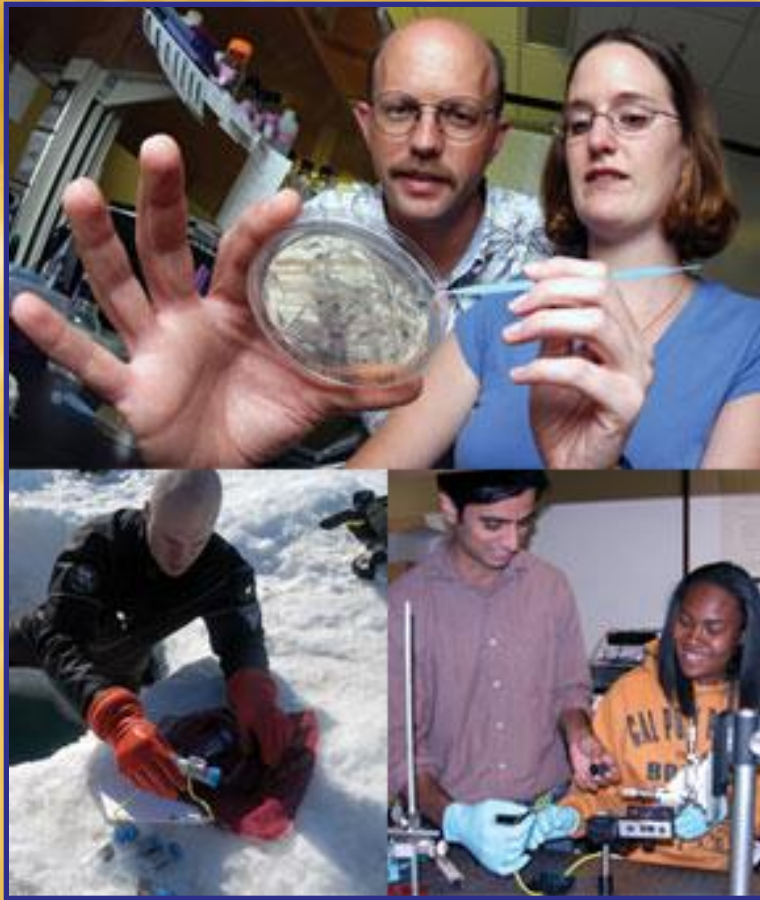
- Are you eligible?
- What does the application consist of?
- What do you have to submit and where?
- When is it due? Do you have time to apply?
- What are they looking for? Are you competitive?
- What are the goals/mission of the program?
- What are key elements?
- What is unique about the opportunity?
- What is the review criteria? How are you evaluated?
- Any tips?

National Science Foundation Graduate Research Fellowship Program
Information: www.nsf.gov/grfp and www.nsfgrfp.org

Apply at: <https://www.research.gov/>



GRFP General Eligibility



- U.S. citizens, nationals, and permanent residents
- Early-career students
- Pursuing research-based MS or PhD in NSF fields
- Enrolled in accredited U.S. institution by fall 2023
- Applicants must **self-certify in the application** that they meet the GRFP Eligibility criteria

National Science Foundation Graduate Research Fellowship Program
Information: www.nsf.gov/grfp and www.nsfgrfp.org

Apply at: <https://www.research.gov/>



GRFP General Eligibility

U.S. citizens, nationals and permanent residents that will be enrolled in an accredited STEM research-based graduate program in the Fall.

Academic levels:

- **Seniors with no graduate study yet**
- **Graduate students can apply 1 TIME ONLY in graduate school either as:**
 - First-year graduate students **OR**
 - Second-year graduate students (\leq 12 months of graduate study by August)
 - Greater than 12 months of graduate study, **with interruption in graduate study of 2 or more years** (can have MS degree no doctoral degrees)

National Science Foundation Graduate Research Fellowship Program
Information: www.nsf.gov/grfp and www.nsfgrfp.org

Apply at: <https://www.research.gov/>



Complete Application

Research.gov

- Personal, Relevant Background and Future Goals Statement (3 pages)
- Graduate Research Statement (2 pages)
- Transcripts, uploaded into Research.gov
- **Three** letters of reference recommended but two required
- Additional information required for some candidates
See Solicitation for eligibility requirements (available on www.nsfgrfp.org)

National Science Foundation Graduate Research Fellowship Program
Information: www.nsf.gov/grfp and www.nsfgrfp.org

Apply at: <https://www.research.gov/>



GRFP Cycle



- **Application:** Available online August
- **Deadlines:** Late October, early November (varies by field)
- **Awards:** Announced late March to early April
- **Best Time to Start Preparing: Now**

National Science Foundation Graduate Research Fellowship Program
Information: www.nsf.gov/grfp and www.nsfgrfp.org

Apply at: <https://www.research.gov/>



2023 GRFP Deadlines

2020 Deadlines:

All documents are due by 5pm local time of applicant's mailing address

October 16, 2023 (Monday): GRFP application deadline for Geosciences and Life Sciences

October 17, 2023 (Tuesday): GRFP application deadline for Computer and Information Science and Engineering, Engineering and Materials Research

October 19, 2023 (Thursday): GRFP application deadline for Psychology, Social Sciences and STEM Education and Learning

October 20, 2023 (Friday): GRFP application deadline for Chemistry, Mathematical Sciences and Physics and Astronomy

October 27, 2023 (Friday): GRFP application deadline for Reference letter

National Science Foundation Graduate Research Fellowship Program

Information: www.nsf.gov/grfp and www.nsfgrfp.org

Apply at: <https://www.research.gov/>



GRFP Supported Disciplines

- Chemistry
- Computer and Information Science and Engineering
- Engineering
- Geosciences
- Life Sciences
- Materials Research
- Mathematical Sciences
- Physics and Astronomy
- Psychology
- Social Sciences
- Science, Technology, Engineering and Mathematics Education (research-focused)



National Science Foundation Graduate Research Fellowship Program
Information: www.nsf.gov/grfp and www.nsfgrfp.org

Apply at: <https://www.research.gov/>



Not Supported by NSF GRFP

- Business administration or management
- Social work
- Medical, dental, law, or public health programs
- Joint science-professional degree programs, e.g., MD/PhD, JD/PhD, etc.
- Education (except research-focused STEM Education programs)
- **See Solicitation** (www.nsfgrfp.org)



National Science Foundation Graduate Research Fellowship Program
Information: www.nsf.gov/grfp and www.nsfgrfp.org

Apply at: <https://www.research.gov/>



NSF Graduate Research Fellowship Program Goals



- To increase the Nation's human capacity in science and engineering by providing fellowships for early-career graduate students who pursue research-based master's and doctoral degrees in NSF-supported disciplines



- To support the development of a diverse and globally engaged US science and engineering workforce

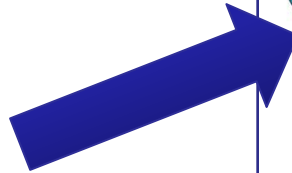
National Science Foundation Graduate Research Fellowship Program
Information: www.nsf.gov/grfp and www.nsfgrfp.org

Apply at: <https://www.research.gov/>



GRFP Key Elements

- Five Year Award – \$159,000
- Three years of financial support
 - \$37,000 Stipend per year
 - \$16,000 Educational allowance to institution per year
- International research through **GROW**
- Internships through **GRIP**
- Access to **XSEDE** cyberinfrastructure resources



Perform research through the GRFP in countries such as Chile, Denmark, Finland, France, Ireland, Japan, the Netherlands, Norway, Singapore, South Korea, Sweden and Switzerland!



National Science Foundation Graduate Research Fellowship Program
Information: www.nsf.gov/grfp and www.nsfgrfp.org

Apply at: <https://www.research.gov/>



GRFP Unique Features

- Flexible: choice of project, advisor & program
- Unrestrictive: No service requirement
- Portable: Any accredited U.S. institution

MS → PhD

- 2,500 Fellowships offered annually out of average 14,000 applications from 2010-2019
- 2018 - 2019 ~ 16% success rate (~12,300 applications)

National Science Foundation Graduate Research Fellowship Program
Information: www.nsf.gov/grfp and www.nsfgrfp.org

Apply at: <https://www.research.gov/>



Emphasis on three high priority research areas in alignment with NSF goals in 2020

- **Artificial Intelligence**
- **Quantum Information Science**
- **Computationally Intensive Research**

NSF will continue to fund outstanding Graduate Research Fellowships in all areas of science and engineering supported by NSF. Applications are encouraged in all disciplines supported by NSF that incorporate these high priority research areas.

National Science Foundation Graduate Research Fellowship Program
Information: www.nsf.gov/grfp and www.nsfgrfp.org

Apply at: <https://www.research.gov/>





Review Criteria

Two National Science Board-approved Review Criteria:

- **Intellectual Merit:** this criterion encompasses the potential to advance knowledge
- **Broader Impacts:** this criterion encompasses the potential to benefit society and contribute to the achievement of specific, desired societal outcomes

National Science Foundation Graduate Research Fellowship Program
Information: www.nsf.gov/grfp and www.nsfgrfp.org

Apply at: <https://www.research.gov/>



Intellectual Merit

Panelists may consider the following with respect to the **Intellectual Merit** Criterion:

- the potential of the applicant to advance knowledge based on the totality of the content in the application, including the strength of the academic record, the proposed plan of research, the description of previous research experience or publication/presentations, and references

National Science Foundation Graduate Research Fellowship Program
Information: www.nsf.gov/grfp and www.nsfgrfp.org

Apply at: <https://www.research.gov/>



Broader Impacts

Panelists may consider the following with respect to the **Broader Impacts** Criterion:

- the potential for future broader impacts as indicated by personal, professional, and educational experiences

National Science Foundation Graduate Research Fellowship Program
Information: www.nsf.gov/grfp and www.nsfgrfp.org

Apply at: <https://www.research.gov/>



Intellectual Merit and Broader Impacts Assessment

- Personal, Relevant Background and Future Goals Statement
- Graduate Research Statement
- Reference Letters
- Transcripts



National Science Foundation Graduate Research Fellowship Program
Information: www.nsf.gov/grfp and www.nsfgrfp.org

Apply at: <https://www.research.gov/>





The following elements should be considered in the review for both criteria:

1. What is the potential for the proposed activity to
 - A. Advance knowledge and understanding within its own field or across different fields (Intellectual Merit); and
 - B. Benefit society or advance desired societal outcomes (Broader Impacts)?
2. To what extent do the proposed activities suggest and explore creative, original, or potentially transformative concepts?
3. Is the plan for carrying out the proposed activities well-reasoned, well-organized, and based on a sound rationale? Does the plan incorporate a mechanism to assess success?
4. How well qualified is the individual, team, or organization to conduct the proposed activities?
5. Are there adequate resources available to the PI (either at the home organization or through collaborations) to carry out the proposed activities?

National Science Foundation Graduate Research Fellowship Program
Information: www.nsf.gov/grfp and www.nsfgrfp.org

Apply at: <https://www.research.gov/>





Resources at nsfgrfp.org



- Tips for applying
- Frequently asked questions (FAQ)
- Find GRFP contacts
- Important links for the GRFP
- Panelist registration

National Science Foundation Graduate Research Fellowship Program
Information: www.nsf.gov/grfp and www.nsfgrfp.org

Apply at: <https://www.research.gov/>



Preparing a Competitive Application

Choose at least three reference writers

- Give them ample time
- Must know you as a scientist and personally
- Share your application materials and the merit review criteria (Intellectual Merit and Broader Impacts)
http://nsfgrfp.org/reference_writers/requirements/
- Track letter submission using FastLane
- Must have 2 letters but no more than 3
- <http://renettatull.wordpress.com/2011/03/03/youve-just-asked-for-a-letter-of-recommendation-now-i-need-some-things-from-you/>

National Science Foundation Graduate Research Fellowship Program
Information: www.nsf.gov/grfp and www.nsfgrfp.org

Apply at: <https://www.research.gov/>



Preparing a Competitive Application

1. Read the Solicitation carefully – Are you eligible? What are requirements?
2. Address the Review Criteria (two NSF Merit Review Criteria -Intellectual Merit and Broader Impacts throughout)
3. Check for spelling and grammatical errors
4. Verify statements and transcripts uploads
5. For NSF, you must self-certify your eligibility according to the criteria in the Solicitation and that is your original work
6. Make sure you Press “Submit” button
7. Regularly check application status for # of reference letters
8. Make sure you are enrolled in graduate school by Fall 2023

National Science Foundation Graduate Research Fellowship Program
Information: www.nsf.gov/grfp and www.nsfgrfp.org

Apply at: <https://www.research.gov/>



Evaluation of applications

- Panelists are academic and research experts in general discipline, not necessarily in your research topic
- Panelists rate your application using the two Merit Review Criteria, Intellectual Merit and Broader Impacts
- NSF requests panelists to provide constructive comments (applicants receive anonymous copies of the reviews)
- Panels make recommendations to NSF
- NSF awards fellowships and honorable mentions

National Science Foundation Graduate Research Fellowship Program
Information: www.nsf.gov/grfp and www.nsfgrfp.org

Apply at: <https://www.research.gov/>



Insight From An Experienced Panelist

Common Reasons Applicants Not Successful:

- Poor Broader Impacts
- Choice of prestigious school over research-matched school
- Inappropriate or uninformative references
- Weak personal statement



National Science Foundation Graduate Research Fellowship Program
Information: www.nsf.gov/grfp and www.nsfgrfp.org

Apply at: <https://www.research.gov/>





Resources at Your University



Facebook
@cdcluprrp



TUTORÍAS Y TALLERES
en inglés y español

📍 ERA 101

lunes - jueves: 8:00 a.m. - 5:00 p.m.

viernes: 8:00 a.m. - 11:30 a.m.

National Science Foundation Graduate Research Fellowship Program
Information: www.nsf.gov/grfp and www.nsfgrfp.org

Apply at: <https://www.research.gov/>





More NSF Resources

NSF GRFP Website (nsf.gov/grfp)

- Solicitation
- FAQ and Guide links

Research.gov

- Online application, user guides, official announcements

Phone and email

- 866-NSF-GRFP (673-4737)
info@nsfgradfellows.org

And ...

- Research Mentors
- Former panelists
- Program coordinators
- Professors
- NSF GRFP recipients
- Family
- Friends

National Science Foundation Graduate Research Fellowship Program
Information: www.nsf.gov/grfp and www.nsfgrfp.org

Apply at: <https://www.research.gov/>



More External Resources

- NSF GRFP Winning Essays

<http://tinyurl.com/NSFGRFPEXamples>

National Science Foundation Graduate Research Fellowship Program
Information: www.nsf.gov/grfp and www.nsfgrfp.org

Apply at: <https://www.research.gov/>



Win by Believing in Yourself, Your Community, and Your Talents

Avoid Self-Disqualification

- All other applicants are “more qualified”
- Research, activities, or contributions are not impressive enough
- Not enough experience
- Not able to express things well



NSF funds studies of emperor penguins who are rife with belief in themselves

National Science Foundation Graduate Research Fellowship Program
Information: www.nsf.gov/grfp and www.nsfgrfp.org

Apply at: <https://www.research.gov/>



Apply to Win

Applying always produces a winning result!

Besides feedback on your ideas from experts, it is great preparation for:

- Other award applications
- Graduate school applications
- Job applications
- Writing publications
- Professional connections

...and you just might win the fellowship too!



WATCH
Your
Destiny

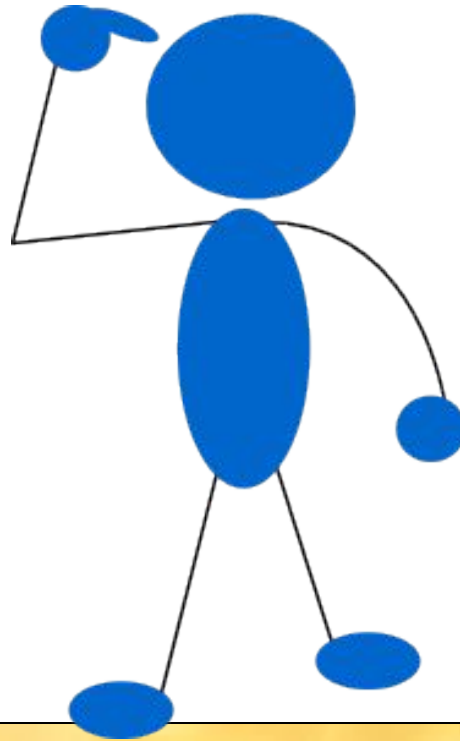
National Science Foundation Graduate Research Fellowship Program
Information: www.nsf.gov/grfp and www.nsfgrfp.org

Apply at: <https://www.research.gov/>



Reflection

- **What** is graduate funding and **Why** is it important to try to fund your graduate education?



FORD FOUNDATION FELLOWSHIPS

National Science Foundation Graduate Research Fellowship Program
Information: www.nsf.gov/grfp and www.nsfgrfp.org

Apply at: <https://www.research.gov/>



Ford Foundation Deadlines

2021 Competition Dates:

2023 Dissertation and Postdoctoral application deadlines:
December 12, 2023 5:00 PM Eastern Standard Time (EST)

2021 Predoctoral application deadline:
December 12, 2023 5:00 PM Eastern Standard Time (EST)

Supplementary Materials deadline for submitted applications
January 31, 2024 5:00PM Eastern Standard Time (EST)

Notification of 2021 Awards
Mid-to-late March 2021

National Science Foundation Graduate Research Fellowship Program
Information: www.nsf.gov/grfp and www.nsfgrfp.org

Apply at: <https://www.research.gov/>



Thank you

Questions?? Feel free to contact us...

- Jorge Colón, PhD
jorge.colon10@upr.edu
- Patricia Ordóñez, PhD
pattiordonez@gmail.com
- Nora Álvarez, PhD
[Poner tu email aqui](#)
- Diana Silva, PhD (c)
dianavsilva@gmail.com



Idibd2k
iDibd2k
idIbd2k
idiBd2k
idibD2k
idibd2k
idibd2K

Thanks to Frances Carter-Johnson, CAHSI, Woodrow Winchester, Nicole Aponte, Jorge Ortiz-Carpena, Edwin Rosado for their

contributions to this presentation.

This presentation and several other resources can be found
<http://ccom.uprrp.edu/~pordonez/NSFworkshop>



For the Writing Workshop

Worksheets in Participants.zip

<http://ccom.uprrp.edu/~pordonez/NSFworkshop>

Worksheets in Essays.zip

<http://ccom.uprrp.edu/~pordonez/NSFworkshop>

Self-Scoring Rubric for Essays

<https://grad.illinois.edu/sites/default/files/pdfs/walkerrobinnsfguidesheets.pdf>

National Science Foundation Graduate Research Fellowship Program

Information: www.nsf.gov/grfp and www.nsfgrfp.org

Apply at: <https://www.research.gov/>

